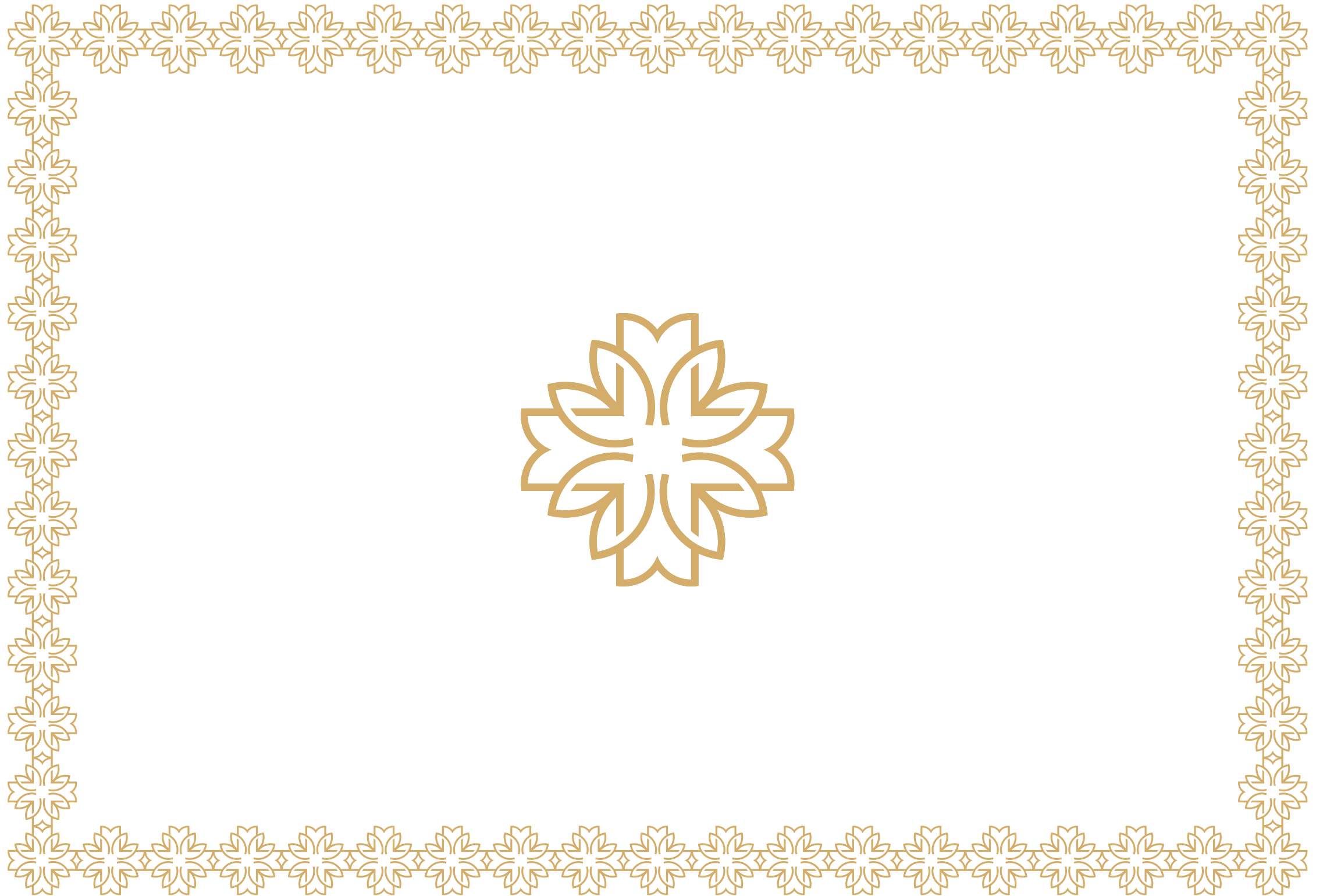




MAHAVIR  
PARK



At Pandit Javdekar, we believe a home is more than a place—it is a feeling of comfort, a symbol of security, success, contentment, and prosperity.

Mahavir Park is designed keeping three symbolisms as a foundation: Prosperity, Success and Contentment. Symbolisms that resonate with the essence of home and family, reflecting our commitment to building spaces that nurture growth, togetherness and well-being.

Embrace the Pandit Javdekar way of life, where each home gives both personal and familial success and prosperity.



## A SYMBOL OF PROSPERITY

True prosperity is more than just good fortune. It is about thriving in every aspect of life: financially, emotionally, and physically. It is about flourishing with happiness, health, and well-being for the entire family.

For every member of the family. It is about abundance and opportunity, about richness and growth. All the things you will experience in your Mahavir Park home!

Pandit Javdekar presents an exclusive masterpiece, seamlessly blending a prime location with expansive layouts, premium features, and the serenity of tranquil surroundings.

Add Pandit Javdekar's signature 'True Sense' design philosophy, and you get natural elements and subtle nuances that enable you to re-discover Nature, experience a rare sense of delight and rejuvenation.

Mahavir Park will be your statement of success, your doorway to lasting contentment.

A rare symbol of real prosperity...just for you.



**DISTINCTIVE DESIGN.  
DISTINGUISHED  
LOCATION.**

Mahavir Park makes a statement. Of achieved success and of future prosperity. Of milestones reached and of more to come. Because Mahavir Park is as exclusive in concept as it is in location. Twelve floors of spacious residences, situated on the premium ITI Road of Aundh. A neighbourhood that is green and restful yet with a world of vibrancy and convenience at your doorstep. Come, celebrate your success at this impeccable address!

And pave the way to a more prosperous future.



\*Artists Impression

## EXCEPTIONAL PLANNING. MINDFUL LIVING.

Indulge in 'True Sense' delights at Mahavir Park.

Our 'True Sense' philosophy is our guiding light,  
leading us to design with sensitivity, give subtleties their due.

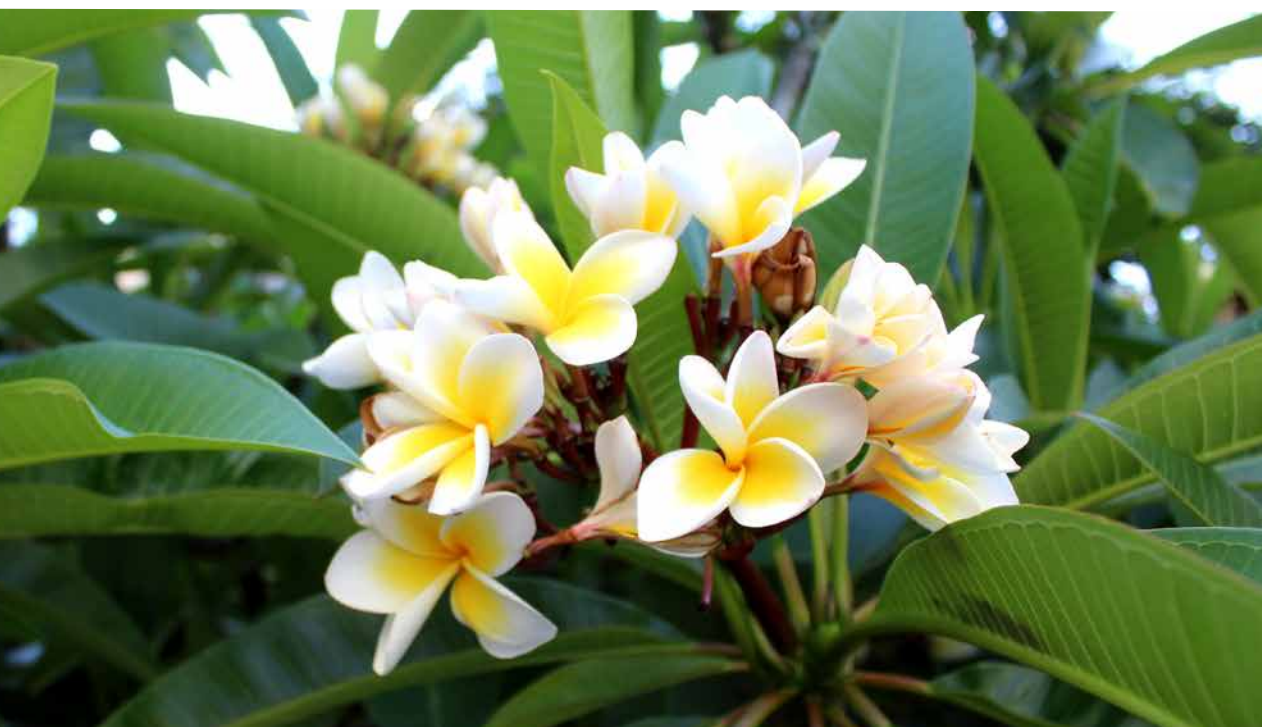
We are creating a world where the senses are stimulated,  
the everyday is enriched and elevated.

It is about re-discovering Nature's beauty, appreciating  
sounds, smells, sights and sensations that we otherwise overlook.

So, every nook offers a surprise, a joy, an experience  
that nurtures physical and mental rejuvenation.







Photographs shot on delivered projects.



\*Artists Impression



## HORIZON DECK

At Mahavir Park, the rooftop is your exclusive amenity space — where mornings start with calmness and evenings bring a quiet joy. Whether you are seeking peace, open skies or community bonding with neighbours, just head to the landscaped rooftop retreat!

#ROOFTOPESCAPE



## A SYMBOL OF SUCCESS

Your address reflects your success.

Mahavir Park stands proudly on ITI Road, not just as a home but as a true symbol of achievement. This premium development radiates elegance and sophistication.

With its prime location and thoughtfully designed, airy spaces, Mahavir Park embodies comfort and positive energy. Enjoy a lifestyle of convenience with high-street shopping, restaurants, IT parks, and schools just moments away, ensuring a truly fulfilling living experience.



\*Artists Impression

**DISTINCTIVELY  
STYLISH,  
SUPERBLY  
FUNCTIONAL.**



#### **WALLS**

- Internal & external walls in AAC block masonry with POP/ Gypsum finishes for internal Walls
  - Plastic emulsion paint for all internal walls (Asian Paints/ Nerolac)
- 



#### **CEILING**

- RCC Slab with POP/ Gypsum finishes for Ceiling with Plastic Emulsion Paint (Asian Paints/ Nerolac)
- 



#### **FLOORING**

- Wooden Flooring in the Master Bedroom
  - 1800 x 1200 mm Vitrified Tiles in all other rooms (Brand: Kajaria/ Asian)
  - Anti-Skid Tiles in Dry Balcony
- 



#### **WINDOWS**

- Anodised Aluminium windows with Mosquito Nets and MS Grills (Brand: Tostem or equivalent)



## DOORS

- Laminated Flush door shutters with Plywood Door frames fitted with Mortise Lock (All Internal Doors 32mm Thick)
  - Main Door and Safety Door with Veneer, SS fittings & Night Latch (Main Door 35mm Thick)
  - Granite Door Frames for toilets
- 



## KITCHEN

- Granite kitchen platform with SS Sink
  - Dado upto 2 ft. from kitchen platform
- 



## TOILETS

- Anti-skid flooring and 600 x 600 mm dado tiles up to Ceiling height in all toilets (Brand: Kajaria/ Simpolo/ Asian)
- Single lever bath fittings in all toilets (Brand: Jaquar or equivalent)
- Sanitary ware of Hindware/ Cera Make
- Wall-hung EWC in all toilets
- Concealed Piping in all Toilets



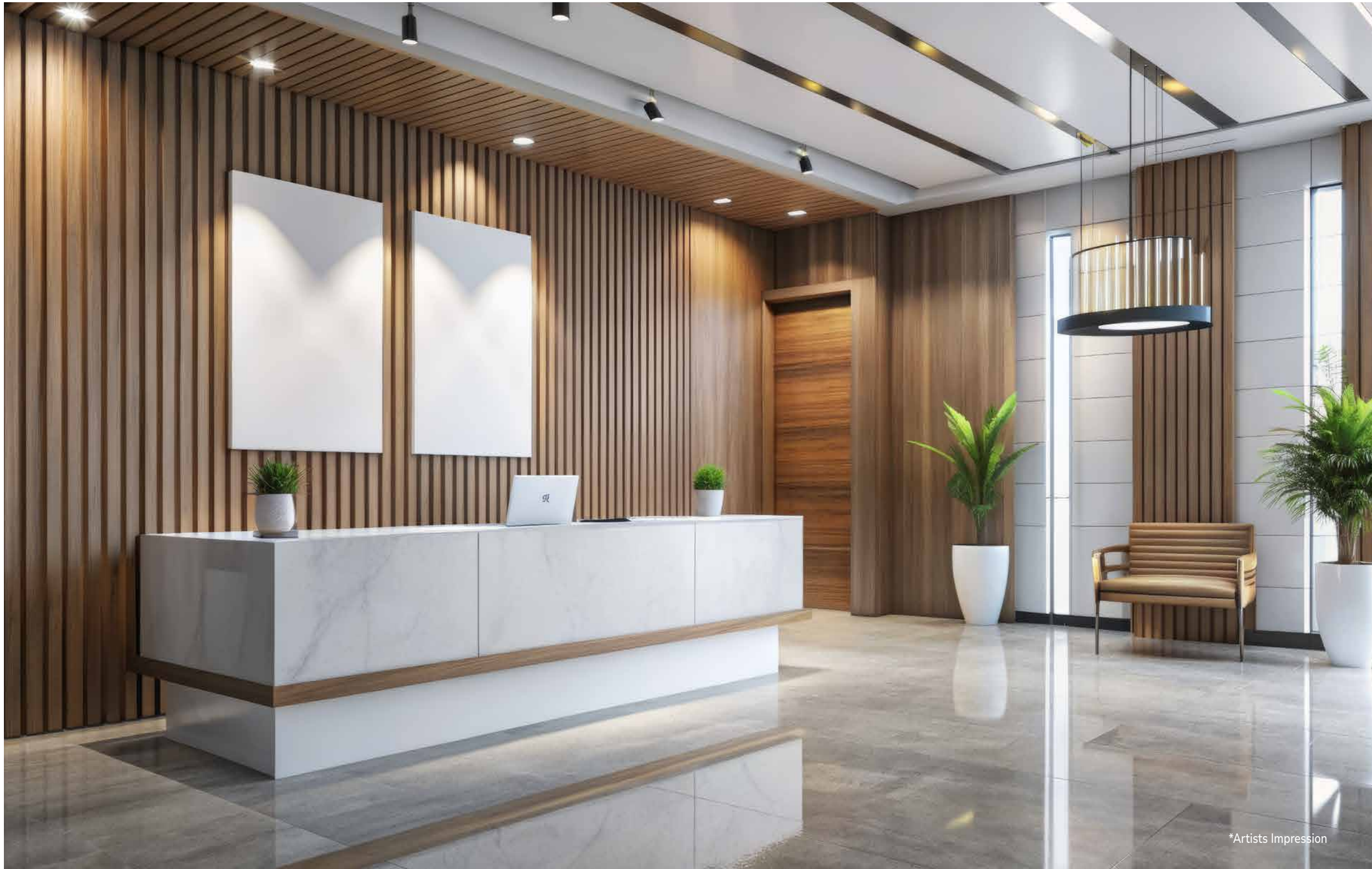
## POWER BACKUP

- Power backup (Inverter Backup) in all flats will cover 1 light point & 1 fan point in all rooms plus One Light Point in Toilet
- 



## ELECTRIFICATION

- 4 Light Points, 1 Fan Point, 2 Plug Points (5 Amp) in each room
  - 1 - Refrigerator Point in Kitchen (15 Amp)
  - 1 Extra - 15 Amp point in the kitchen
  - 1 – Boiler/Geyser Point in Toilet (15 Amp)
  - 1 – Washing Machine Point in Dry Balcony (15 Amp)
  - AC point in all bedrooms and living & dining room (15 Amp)
  - Concealed Copper Wiring
  - TV & Telephone Points in all rooms
  - Brand: Cable/Wiring – Polycab/ Finolex  
Switches – Anchor/ Legrand
  - Exhaust Fan Provision in Kitchen & Toilets
- 
- 
- 
-



\*Artists Impression



# COMMON AMENITIES



Decorative Entrance Lobby with Ramp Access



Marble/ Kota for treads, risers and landings with decorative MS railing



Electronic security system with Video Door Phone



Solar Water heating system with Heat Pump



1 Nos. - 8-passenger auto-door elevator of reputed make (Make: Kone/Schindler/ Equivalent)



1 Nos. – Stretcher lift auto-door elevator of reputed make (Make: Kone/Schindler/ Equivalent)



Landscaped areas/courtyards (wherever possible)



Genset backup for lift, common lighting and water pump (Make: Kirloskar/Kohler/Cooper)



Intercom Facility



Toilet for Watchmen/Drivers/Servants at Basement/ Parking Level



Gas pipeline as per MNGL



EV charging points at extra cost in each parking connected to the respective individual electrical metres



CCTV Camera System



Automated System for Water Pump



Barrier-free common area access for the elderly with the provision of wheelchair

# PERFECT PROXIMITY, IDEAL LIFESTYLE.

## EDUCATION

- Savitribai Phule Pune University
- Indian Inst. of Science Education & Research
- Modern Law College
- ITI Girls College
- Vibgyor High school



## SHOPPING & ENTERTAINMENT

- Westend Mall
- Fab India
- Ozone mall
- Taneira
- Reliance
- Phoenix Mall of the Millennium
- Ozone mall
- E-square



## CONNECTIVITY

- Metro Station
- Pune Railway Station
- Expressway
- Pune Airport



Today's urban life has become a stressful story of long commutes. Mahavir Park offers the luxury of proximity and connectivity that will help you spend more time with loved ones, and less on the road.

#### HEALTHCARE

- Manipal Hospital
- Jupiter Lifeline Hospital
- Sanjivani Medipoint
- 9M Hospitals
- AIMS Hospital

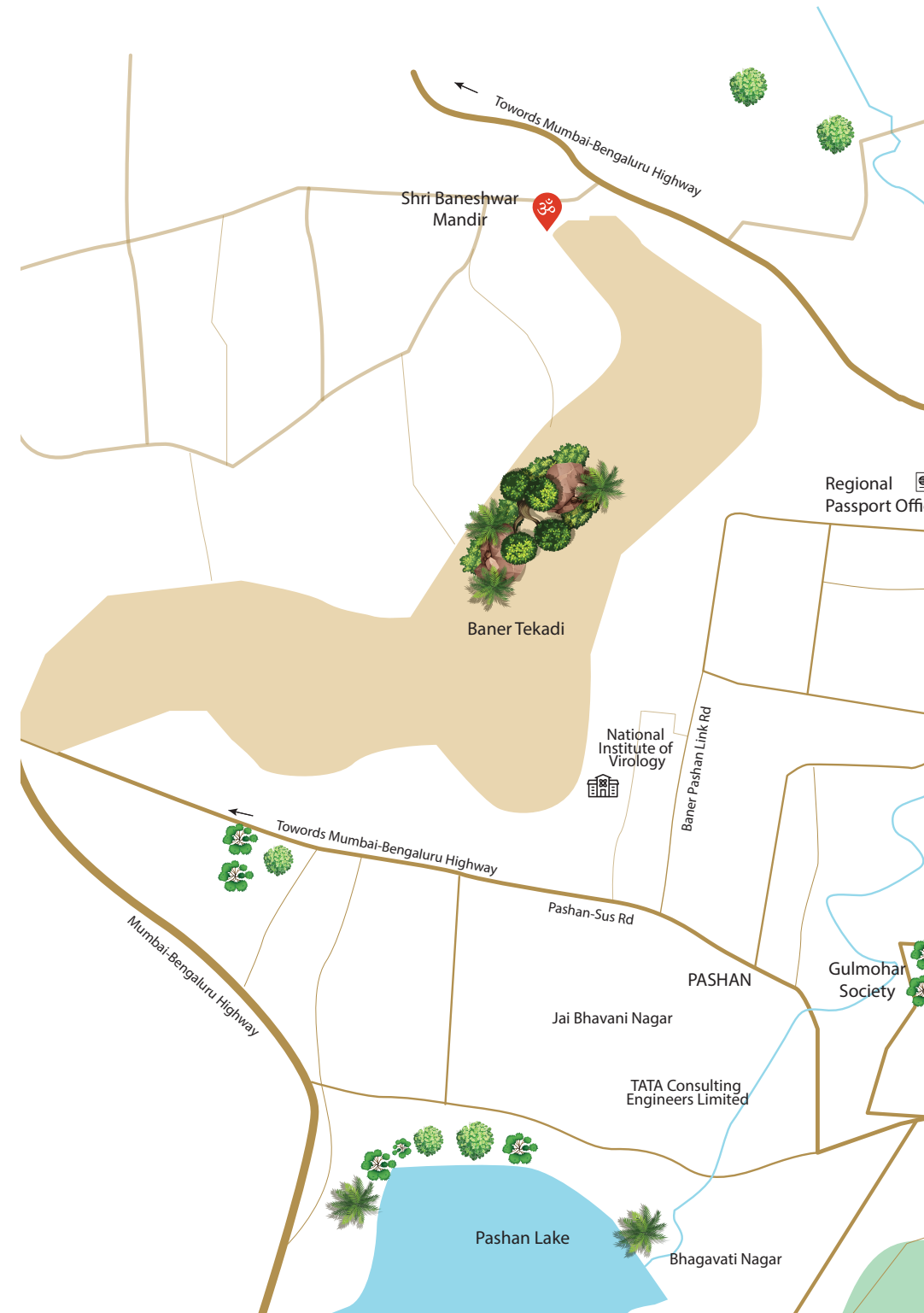


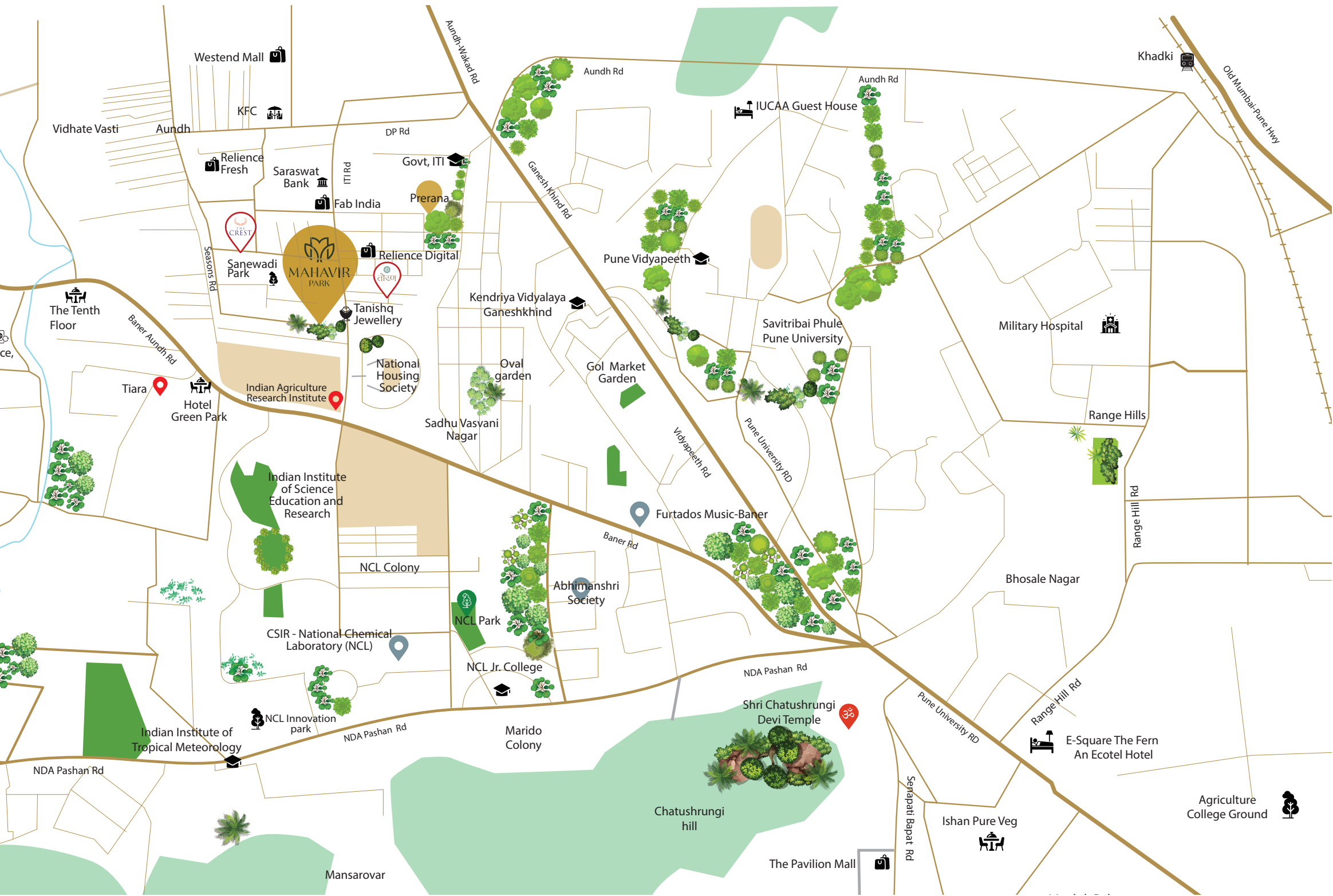
#### RESTAURANTS

- Sarjaa
- Loco Otro
- Taareef
- The Blue Plate
- Seasons



PRIME LOCATION.  
EXCELLENT CONNECTIVITY





Map not to scale

## THE LEGACY GROWS



**Today, Pandit Javdekar is a name to reckon with in luxury real estate.**

A brand committed to creating 'real' value, forging 'real' relationships, and making a 'real' difference to the city and its living standards.

Pune's Deccan area bears the stamp of several Pandit Javdekar projects.

The grandeur and prominence of Prabhat Road speak volumes for this developer, with 39 out of 80+ projects here, and the others at elite addresses across Pune, such as Model Colony, Aundh, Baner, Karve Nagar, Kothrud and Mitra Mandal.


Each one living proof of our futuristic vision, innovative design, quality workmanship and sustainable construction.

This promise, this legacy continues to spread out across Pune.

Elevating spaces, transforming lifestyles and shaping brighter futures.



+91 86989 05828 | +91 95450 94355 | sales@panditjavdekar.com | www.panditjavdekar.com  
Corporate Office Address - 101, Vijaydurg, 115C, Prabhat Road, Erandwane, Pune, 411004.  
Site Address - Mahavir Park, Final Plot Nos. 4, 5 & 6, Diagonally Opposite Sarjaa Restaurant,  
Off ITI Road, Aundh, Pune - 411007.

 MAHARERA Registration No. P52100077101 / maharera.mahaonline.gov.in.



**Disclaimer:**

This brochure is an imaginary concept and not be to scaled. All plans are subject to accommodate the changes as per the sanctioning authorities.  
All amenities and specifications are as per availability of the developer, images shown are artistic impressions.